

Our versatile venue allows you to combine two or all of our function areas to suit larger gatherings. The seamless flow between the indoor space and outdoor area creates a stunning indoor/outdoor setting, perfect for celebrations that move with the moment. The adjoining courtyard offers a slightly more private feel—ideal when a little separation between spaces is preferred.

Please note that the outdoor area is available for bookings until 10pm. In the event of heavy rainfall, some parts of the outdoor space may become wet, but our team will do everything possible to ensure your guests stay dry and comfortable.



## OUTDOOR AREA & INDOOR VENUE

### CAPACITIES

Seated: 90  
Standing: 150

### MINIMUM SPEND

A food and beverage minimum spend will apply, please reach out to us to discuss.

## WHOLE VENUE

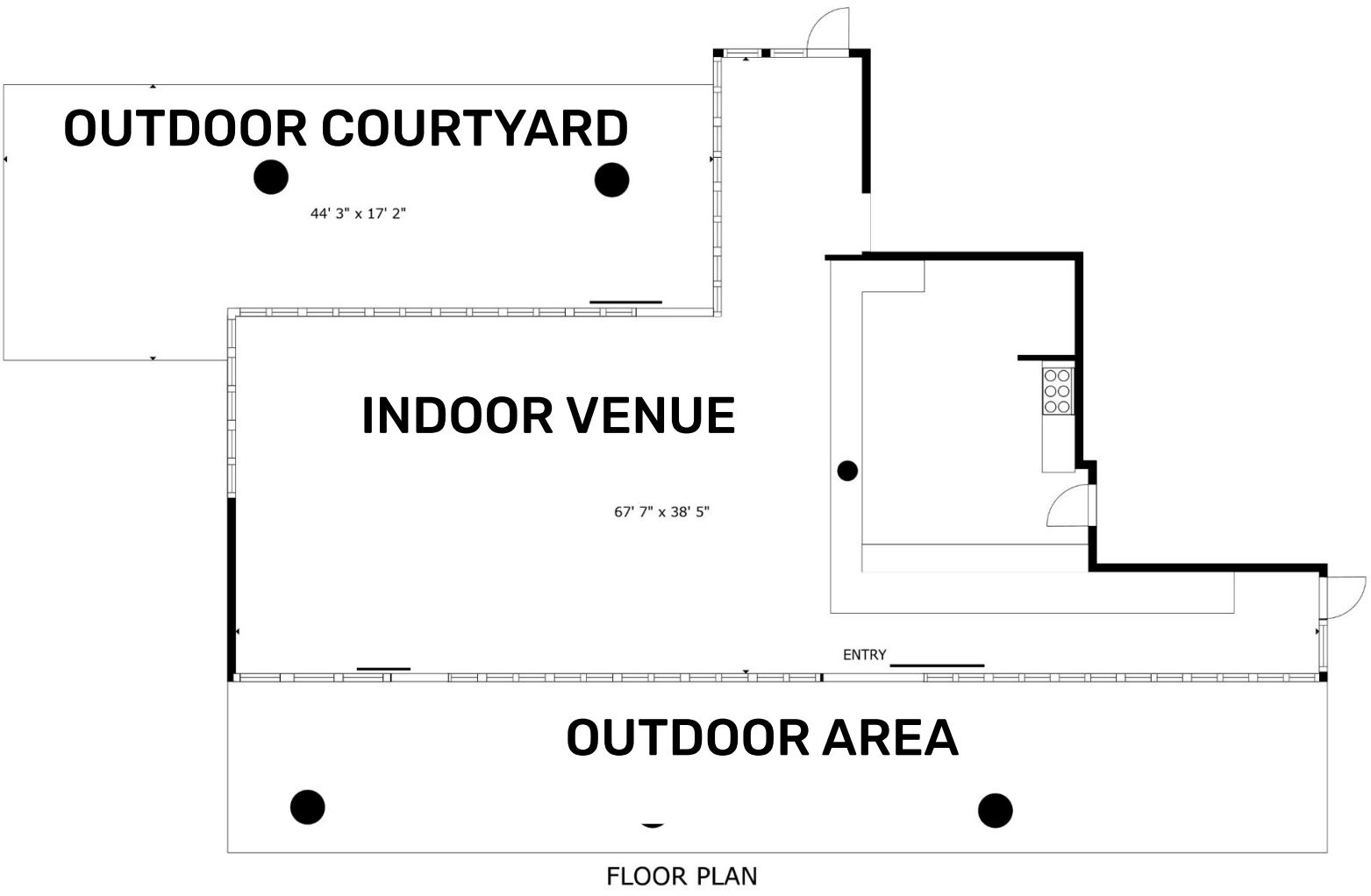
### CAPACITIES

Seated: 110  
Standing: 180

### MINIMUM SPEND

A food and beverage minimum spend will apply, please reach out to us to discuss.





**3D TOUR** 